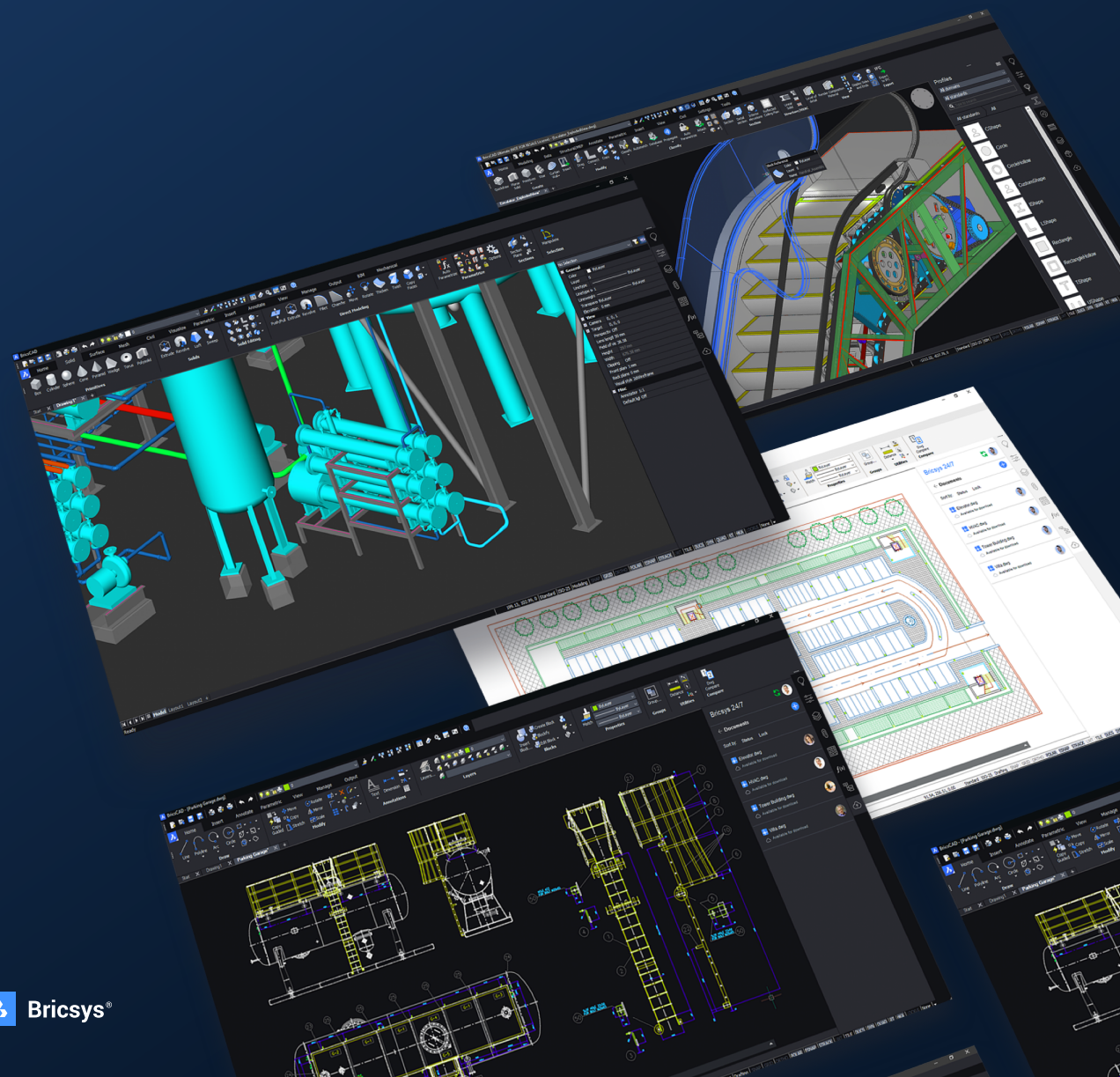




Migration made simple

Make the move to BricsCAD in just a few hours.
Don't take our word for it, prove it to yourself.





Introduction

Migrating to BricsCAD® has never been easier. In this guide you'll learn how to transition from AutoCAD® quickly and painlessly.

BricsCAD® works very much like AutoCAD® and supports much of the same functionality including Xrefs, plotting, sheetsets, PDF attach/import, and viewports. The tips and pointers included will help speed up your transition.

There are just 4 simple steps to migrate from your existing CAD software to BricsCAD

Step 1: Download and Install BricsCAD

Step 2: Explore the Familiar User Interface

Step 3: Begin the Migration to BricsCAD

- Plan your migration
- Execute your migration
- Check your migration settings

Step 4: Test a Project with BricsCAD

The transition shouldn't take more than a few hours. After which you'll have a new version of an existing drawing/model in BricsCAD. It's that simple, so, let's get started.



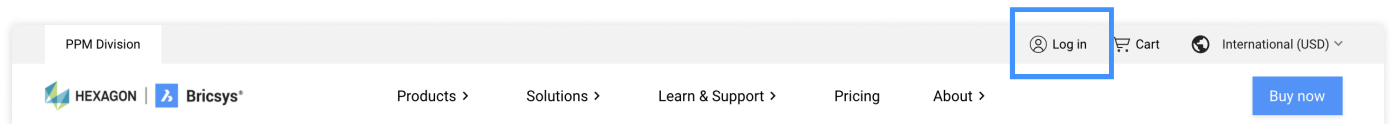
Step 1: Download and Install BricsCAD

External Resource: The BricsCAD Download

<https://www.bricsys.com/download.do>

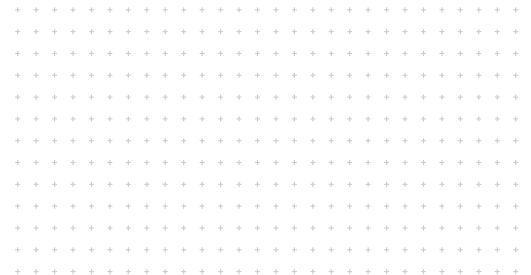
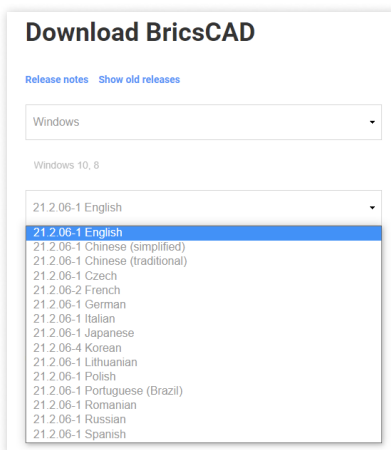
Create Bricsys Account & Download the BricsCAD® Free Trial

Register your Bricsys account, this takes about 30 seconds. Then log into the account.



Download BricsCAD

You can now download and install BricsCAD® in 15 different languages. If you select the Windows operating system, You can also choose whether you want the 32 or 64-bit version. After specifying your download options, agree to the Terms of Use and choose Download.



Once the download is complete. Navigate to the installer file and double click to start the installation process.

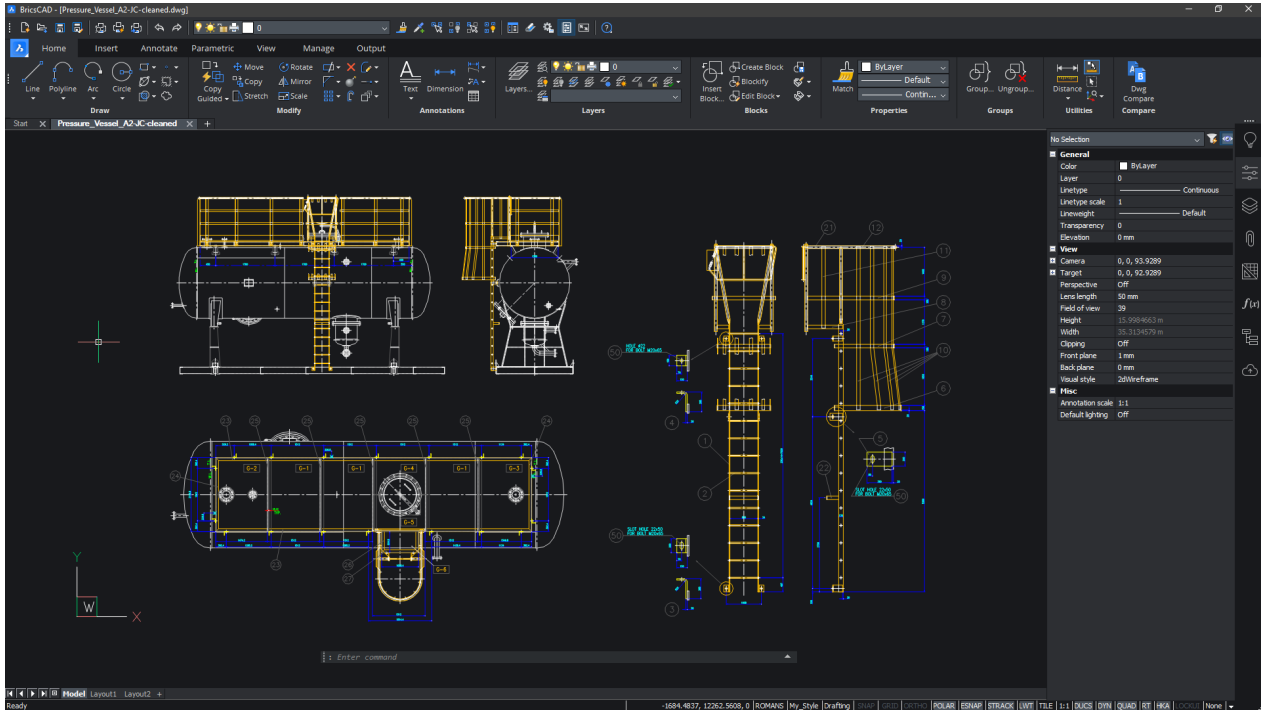


Note: This process will be different depending on the operating systems selected.

You are now ready to go, launch BricsCAD® from the desktop or menu.



Step 2: Explore the Familiar User Interface

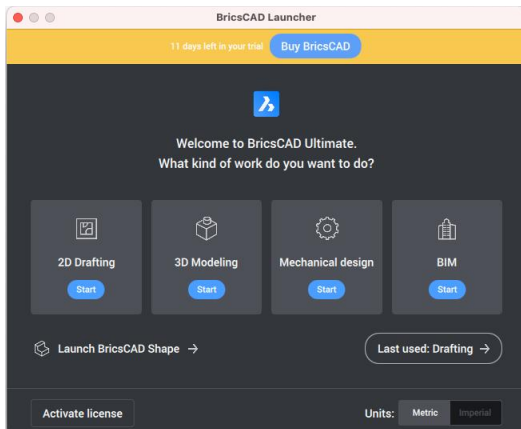
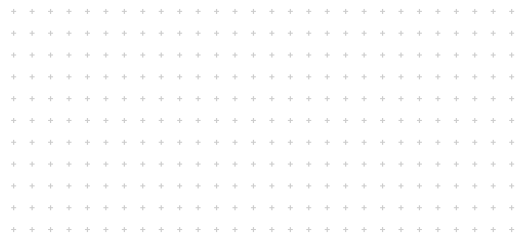


BricsCAD® is simple to learn and comfortable from the start. The “Out-of-the-box” installation has a consistent look and feel.

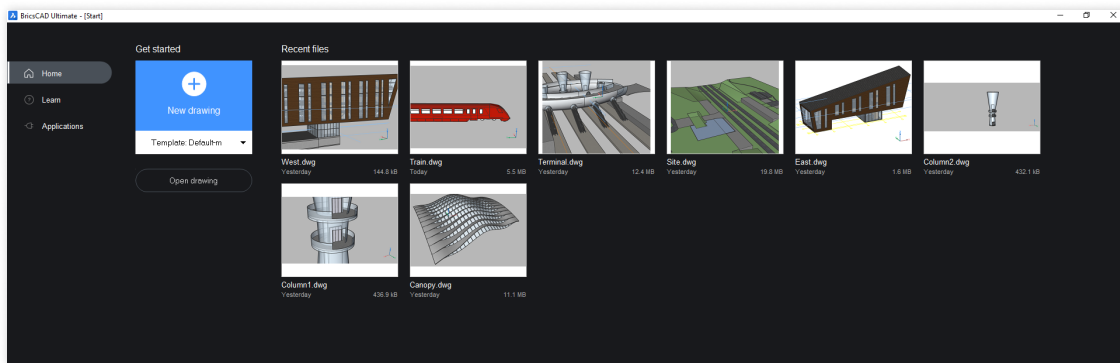
- Paper & Model Space
- Ribbon/Panel Interface
- Command Line & Status Bar
- Similar Commands and Menus
- Familiar Toolbar Layout
- Dockable or Floating Panels
- Right-Click menus
- Document Tabs
- Multiple Workspaces

Language Support & Global Use

Should you want to use more than the English version of BricsCAD®, you can. Just download that language version and install it. Your existing license keys will work for any of the 15 current localized BricsCAD® versions. Any BricsCAD® license key works anywhere in the world for no extra charge.



Use the BricsCAD Launcher to “Get Started”. The 30-day BricsCAD Trial contains 2D, 3D, Mechanical, and BIM workspaces. Most new users start by selecting the “2D Drafting” icon.



Access recent drawings, open new .dwg/.dwt or browse to an existing dwg file and you’re ready to start.

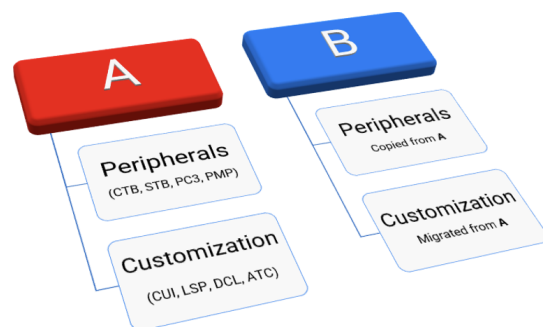
Step 3: Begin the Migration to BricsCAD

Plan your migration

BricsCAD®, like any CAD program, is constantly accessing a variety of files to do its job and it is likely most of those files are coming from a network location. In the BricsCAD® SETTINGS command, you can set all the various pathing locations for support files, XRef paths, plotter locations, etc., and then test to be sure it all works.

Run Parallel A and B installations

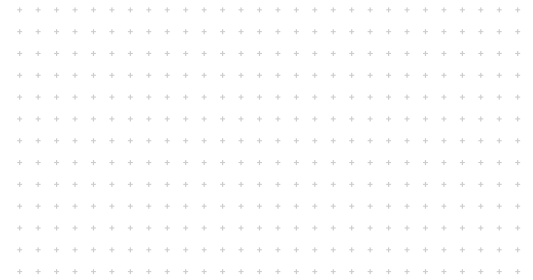
- Establish network folders
- Migrate customization
- Replicate peripherals
- Clean, minimum, migration
- Test B while still running A



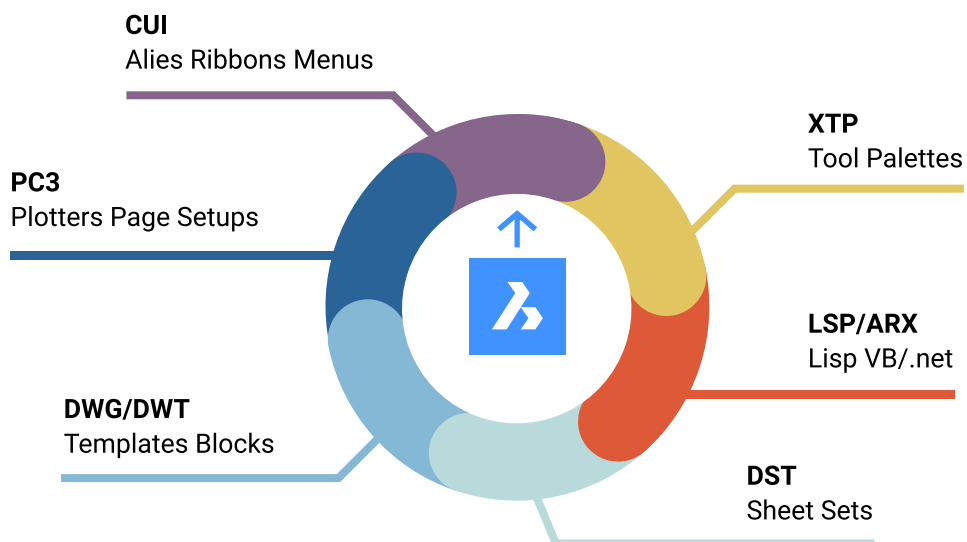


Identify the tools that you want to migrate

- Custom CUI's (including standard ACAD.CUIx), ACAD.pgp.,
- Tool Palettes, LSP/ARX Files including
 - Standard ACAD.LSP and ACADDOC.LSP,
 - VB and .NET routines,
 - DST Files (Sheet Sets),
 - DWG/DWT Templates and Blocks,
 - PC3 Files, PMP, Plotters,
- Plot Styles, Custom Hatch Patterns



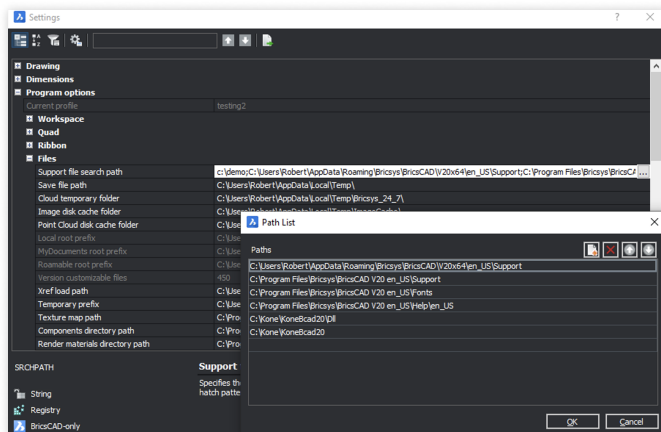
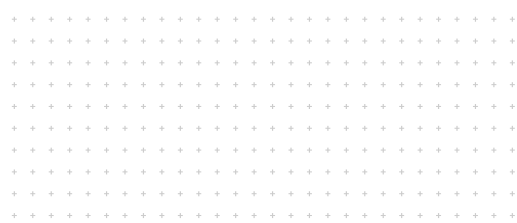
Profiles (.arg) will be created based upon the information above and the respective file locations.
Use and location of third-party applications are also needed.



Clean-up as you migrate!

- Remove backup files
- Remove obsolete programs
- Simplify folder structure
- Clean blocks/palettes
- Migrate the minimum!

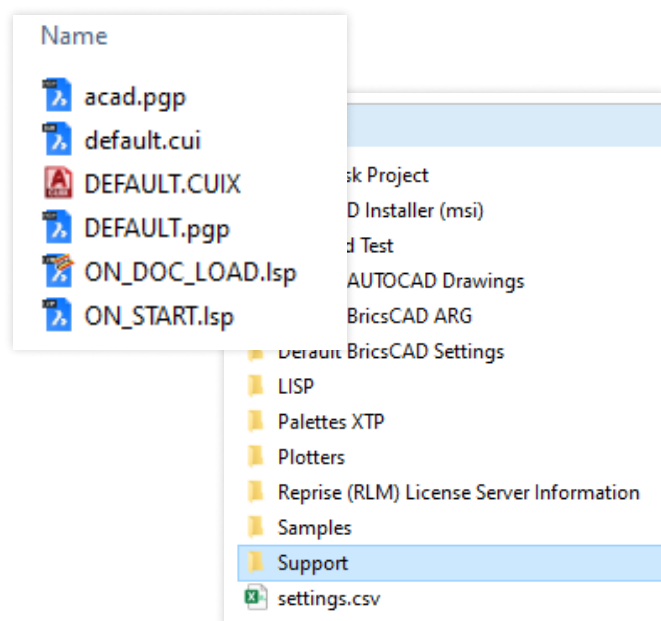




Migrate environmental folders and content

- Create folders to replicate environment folders for library content like blocks and LISP files
- Copy/clean as you go
- Rename key files as you go

If you have customized programs (LSP), template files (DWT), block libraries (DWG), menus (CUI), tool palettes (XTP), or other components that your users are already familiar with you'll want to bring them over to BricsCAD® as well. Think about how you'd like the files to be organized into folders and start copying the files you'll need from the old locations to the new BricsCAD® location.



Where are the existing support files located?

- Centralized Server?
- Individual Local Machines?
- A combination of network and individual drives?

Exact Files for potential renaming and appropriate folder placement need to be provided.

Make BricsCAD Work the way you want

Making BricsCAD® function as much like the old system your users already know is a great way to improve user satisfaction, raise productivity, and shorten training times for BricsCAD® implementation.

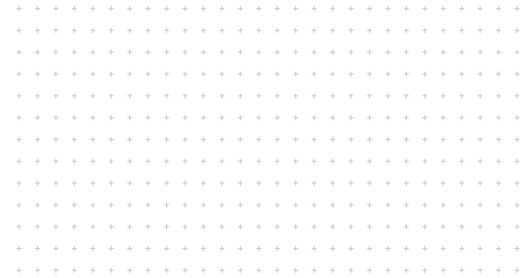


Basic Support Files

Create a standard BricsCAD® folder in which to house all modified BricsCAD® files. Creating subfolders for each support file type should be simple. **Copy** your current support files and each respective subfolder and **Rename** them accordingly.

Simple support folders recommended!

- ACAD.PGP becomes DEFAULT.PGP in BricsCAD®
- ACAD.LSP becomes ON_START.LSP in BricsCAD®
- ACAD.CUIx becomes DEFAULT.CUI in BricsCAD®
- ACADDOC.LSP becomes ON_DOC_LOAD.LSP in BricsCAD®



External Resource: Video – Moving from A to B: Migration Strategies.
And other BricsCAD videos

<https://www.bricsys.com/en-us/bricscad-digital-summit-2021/?wvideo=9z3veyctns>

PGP File

Command aliases are saved in a *.pgp file (ProGram Parameters file). By default, the “DEFAULT.pgp” file in the support directory of the Roamable Root folder is used.

- **Copy** “ACAD.pgp” from AutoCAD location; **Paste** into BricsCAD® Support Folder; **Rename** “DEFAULT.pgp”

External Resources: Command Aliases Help Page

https://help.bricsys.com/document?title=_guides/BCAD_customization/GD_commandaliases.html&documentVersion=V22



Key Tip: No naming overlap!



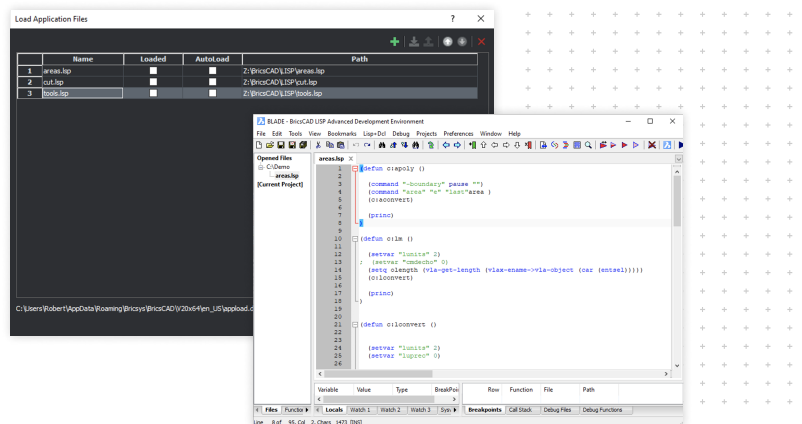
LISP (.lsp)

When BricsCAD® starts up it automatically looks for an AutoLISP file called ON_START.LSP and executes any code it finds in the file, so you need to be sure it exists and that BricsCAD® can find it. All you must do is place the ON_START.LSP file in BricsCAD®'s support directory – you can manage this using the SETTINGS command and looking under Program Options / Files. (ACAD.lsp becomes ON_START.LSP in BricsCAD®)

- **Copy** "ACAD.LSP" from AutoCAD® location; **Paste** into BricsCAD® Support Folder; **Rename** On_Start.LSP"
 - Rename Key Files
 - Watch out for Hard-Coded Pathing and AutoCAD® specific folders

Migrate LISP

- Rename key files
- Open via APPLOAD, BLADE or ON_START
- Restart BricsCAD® to verify
- Watch out for:
 - Hard coded paths
 - AutoCAD® specific folders



```
(if (findfile "x:\\lisp\\standards.lsp")
(load "x:\\lisp\\standards.lsp")
)

(prompt "\nBricsCAD startup routine loaded.")
```

External Resource: LISP Migration Blog

https://help.bricsys.com/document?title=_guides/BCAD_customization/GD_lisp.html&documentVersion=V22

External Resource: Blade Help Page

https://help.bricsys.com/document?title=_commandreference/CMD_blade.html&documentVersion=V22



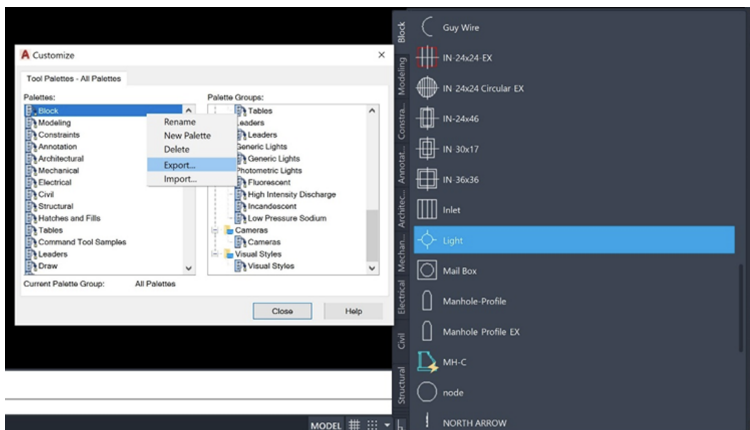
Tool Palettes

Tool Palettes improve user efficiency, are generally a part of “best practices” and can be imported from your existing CAD platform.

Export Tool palettes

To Export a Tool Palette (from AutoCAD®)

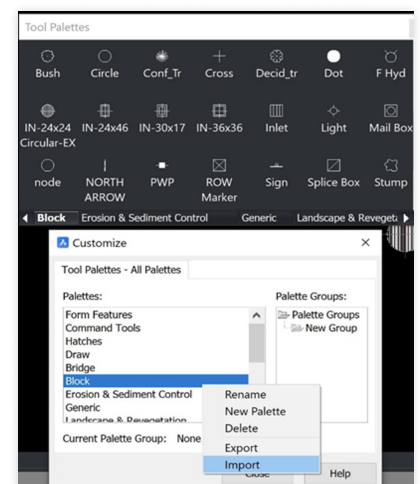
- On any drawing, enter CUSTOMIZE to open the Customize window.
- Right-click a tool palette and choose Export.
- Choose a location to save the .xtp file.
- On the target system (or on the target program), enter the CUSTOMIZE command.
- Right-click on any palette name and choose Import.
- Browse to the desired folder.
- Click Close



Import Tool palettes

To Import a tool palette (in BricsCAD®)

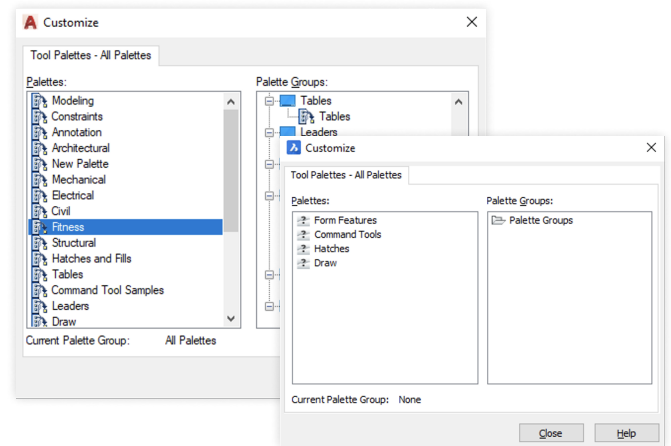
- Open the Tool Palettes panel.
- In the Tool Palettes panel, right-click and choose Customize Palette, which will open the Customize dialog box.
- In the Palettes panel on the Customize dialog box, right-click and choose Import in the context menu.
- On the Import Palette dialog, select a folder, then select a palette file (*.xtp).
- Click the Open button or double-click to import the palette. The palette is added to the Palettes list.
- Click the Close button to close the Customize dialog box.





Migrate tool palette components

- Export individual palettes as XTP from AutoCAD®
- Note pathing of files and edit if required
- Import into BricsCAD®
- Keep XTP's for later possible edits



External Resource: Tool Palettes Help Page

https://help.bricsys.com/document?title=_guides/BCAD_customization/GD_toolpalettes.html&documentVersion=V22

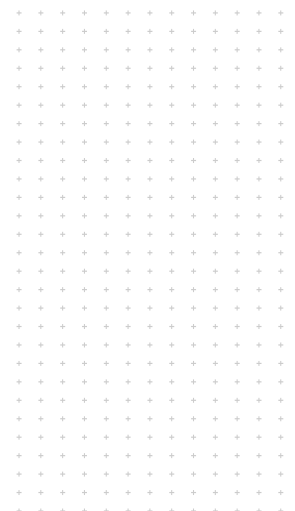
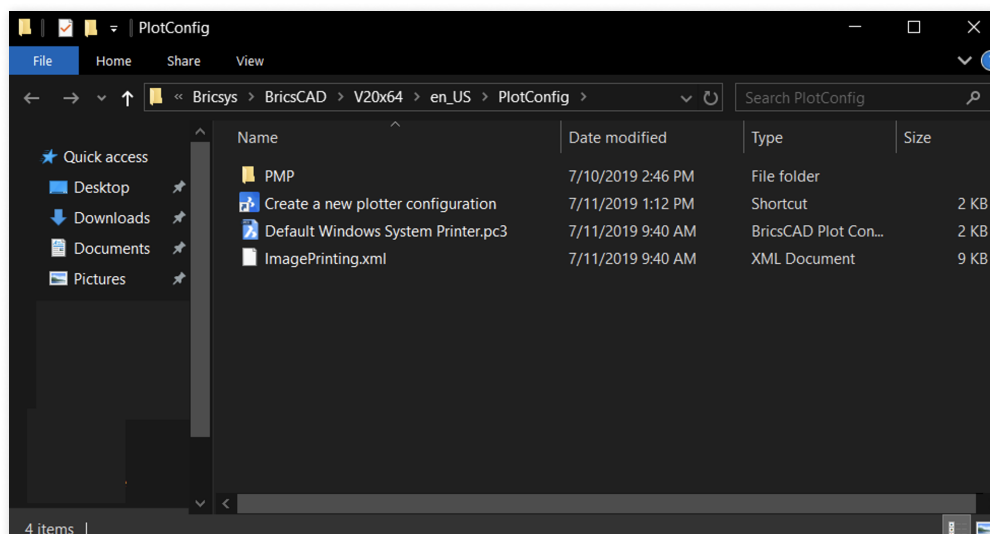
Plotters/PC3/PMP Files

BricsCAD® uses your current plotters, PC3 files, and PMP.

- **Locate** your current plotter files from the current location, and **copy/paste** them into BricsCAD® Support Folder.
 - PC3 files are saved in the Plotconfig subfolder of your Roamable root folder.

Copy peripherals

- Use PlotterManager command
- Copy PC3/PMP files from existing application into the PlotConfig window in BricsCAD®
- These files “wrap around” system drivers so they may be copied directly as they are not proprietary





External Resource: Plotter Configuration Help Page

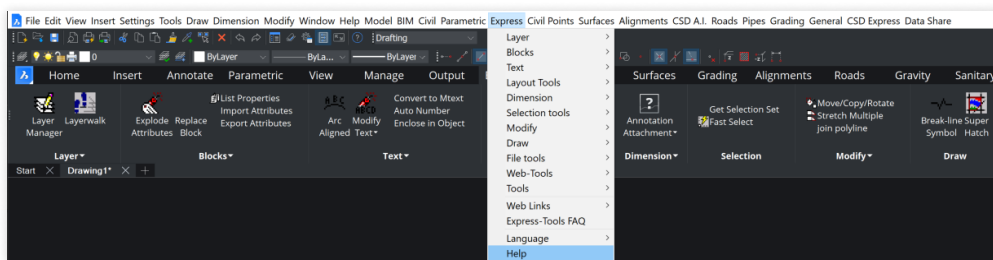
https://help.bricsys.com/document?title=_guides/BCAD_printing_and_plotting/GD_plotterconfiguration.html&documentVersion=V22

External Resource: Printing and Plotting Help Page

https://help.bricsys.com/document?title=_guides/BCAD_printing_and_plotting/GD_generalprocedureforprinting.html

App. Catalog

The App Catalog includes apps that developers, outside of Bricsys, created to address specific needs. Over 1500 external developers create apps for BricsCAD® and more than 400 of them publish their apps directly to the Bricsys App Catalog. You can download some apps, such as Express Tools, free of charge. Others are available for purchase from the publisher.



External Resource: BricsCAD.com App Catalog

<https://www.bricsys.com/applications>

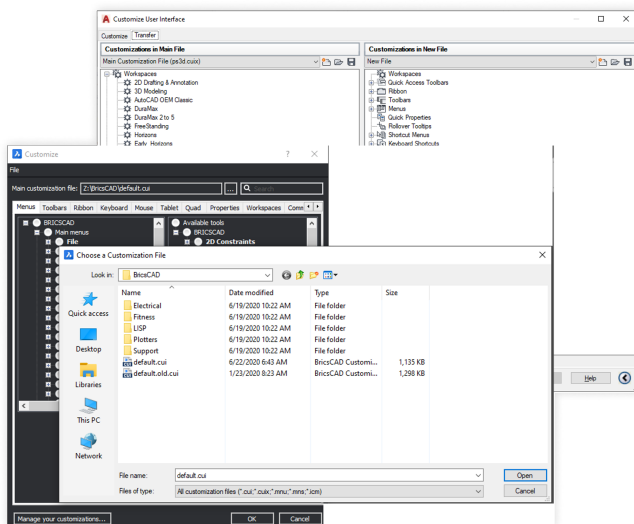
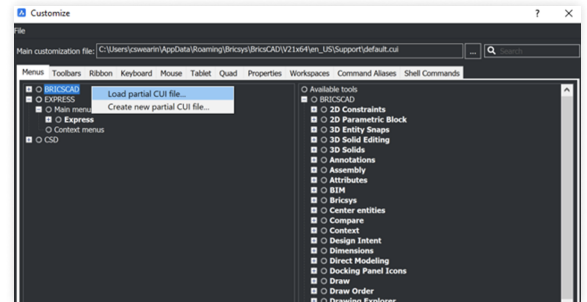
Make BricsCAD Look the way you want

The most effective way to adapt to BricsCAD is to make BricsCAD look and feel exactly like you want it. The appearance of the BricsCAD application window varies slightly depending which profile you selected. The main user interface elements, however, apply across profiles even if the tools differ. Those elements can be controlled through the settings, CUI, and profile manager.



Migrate CUI components

- **Create** clean CUX with only custom elements
- **Open** the CUI in AutoCAD; **Export** the custom CUI elements using AutoCAD CUI Transfer Tab; **Save Partial CUI**.
- **Read** Partial CUI into BricsCAD® CUI
- **Open** the Default CUI in BricsCAD; **Right-Click** to “Load Partial CUI File”; **Select** the previously saved Partial CUI file, **Add/Load** elements to workspace.



External Resource: Loading CUI files Help Page
https://help.bricsys.com/document?title=_guides/BCAD_customization/GD_loadingandunloadingcuifiles.html&documentVersion=V22

Check the Settings and Profiles

Keep in mind, we want to migrate all of the support files from AutoCAD® to BricsCAD®. Eventually, Autodesk will be removed from your machine, so the support files must be available. Do not remove AutoCAD® until the BricsCAD® environment has been tested. Open .dwg with BricsCAD®, and you're on your way.

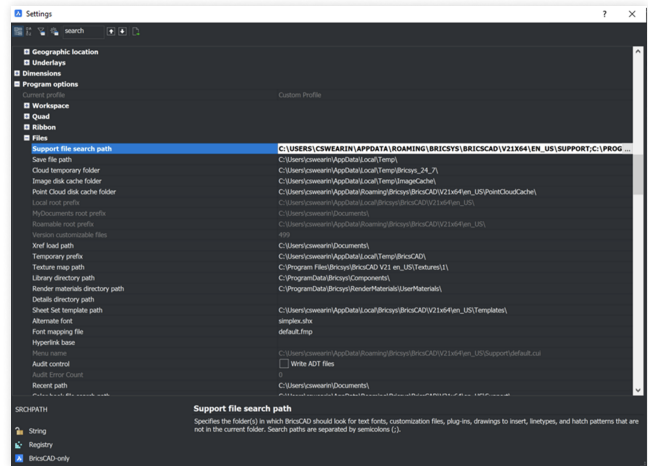
Settings

Get familiar with the settings/options within BricsCAD®. Access by using “Settings” or “Options” command. Add support file pathing, change units, modify quad tools, set alternate fonts, template locations, etc. Use the search bar at the top to quickly isolate specific desired settings.



Sheet Set (.dst), Drawing Templates, Blocks

Sheet set files (.dst), drawing templates (.dwt), and blocks can remain in their current local location. Using the “Settings” command, browse to desired pathing respectively, and change accordingly.



External Resource: Settings Help Page

https://help.bricsys.com/document?title=_dialogboxes/DB_settings.html&documentVersion=V22

Profiles (.arg)

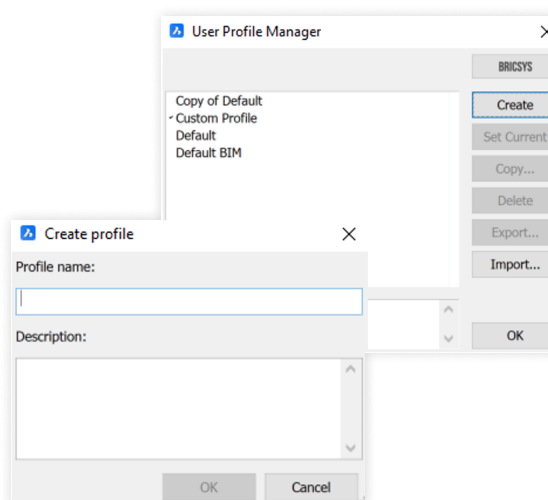
In BricsCAD®, you can customize the settings that control your drawing environment, which can then be saved in a user profile. You can create multiple user profiles, e.g., a profile to run BricsCAD® with a white background and a limited set of toolbars and another profile with no command bar and all toolbars and snap settings needed to draw comfortably in 3D. User profiles can also be used when multiple users share the same computer, and each user likes to create their own personal drawing environment. User profiles can be exported to a file, which can then be imported on a different computer. This allows you to copy your settings to a new computer or to install the same settings on multiple computers.

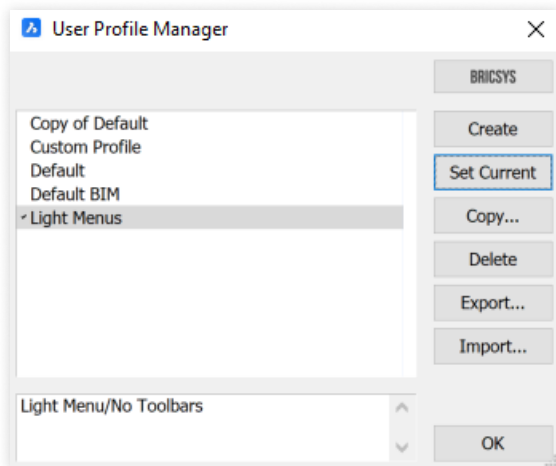
If you use third party applications on top of BricsCAD, you might want to create a user profile to use with each of these applications.

- When BricsCAD® is running, launch the **ProfileManager** command.

Work with Profiles

- Use ProfileManager command
- Share ARG files
- Edit paths in the file if desired





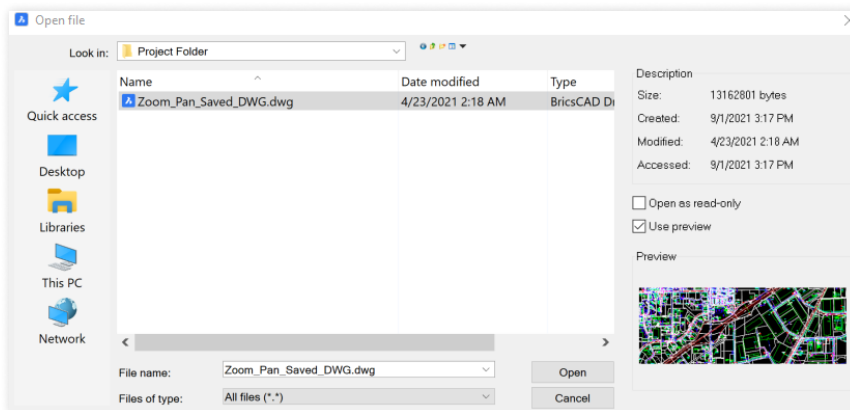
External Resource: Profile Manager Help Page

https://help.bricsys.com/document?title=_dialogboxes/DB_userprofilemanager.html&documentVersion=V22

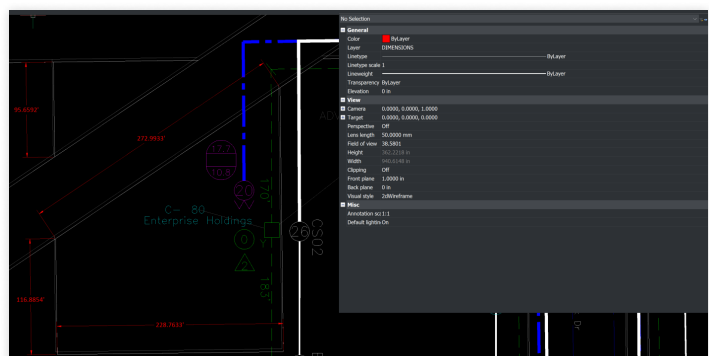
Step 4: Test a Project with BricsCAD

BricsCAD supports the same functionality including opening, editing, and plotting drawings. You'll find that many of your favorite and most common commands are similar, and function exactly as intended.

To test BricsCAD's compatibility, **Open** an existing drawing using the "open" command. Notice that the look and feel of your drawing is exactly the same. If inclined, open the same drawing with your other CAD software and compare.



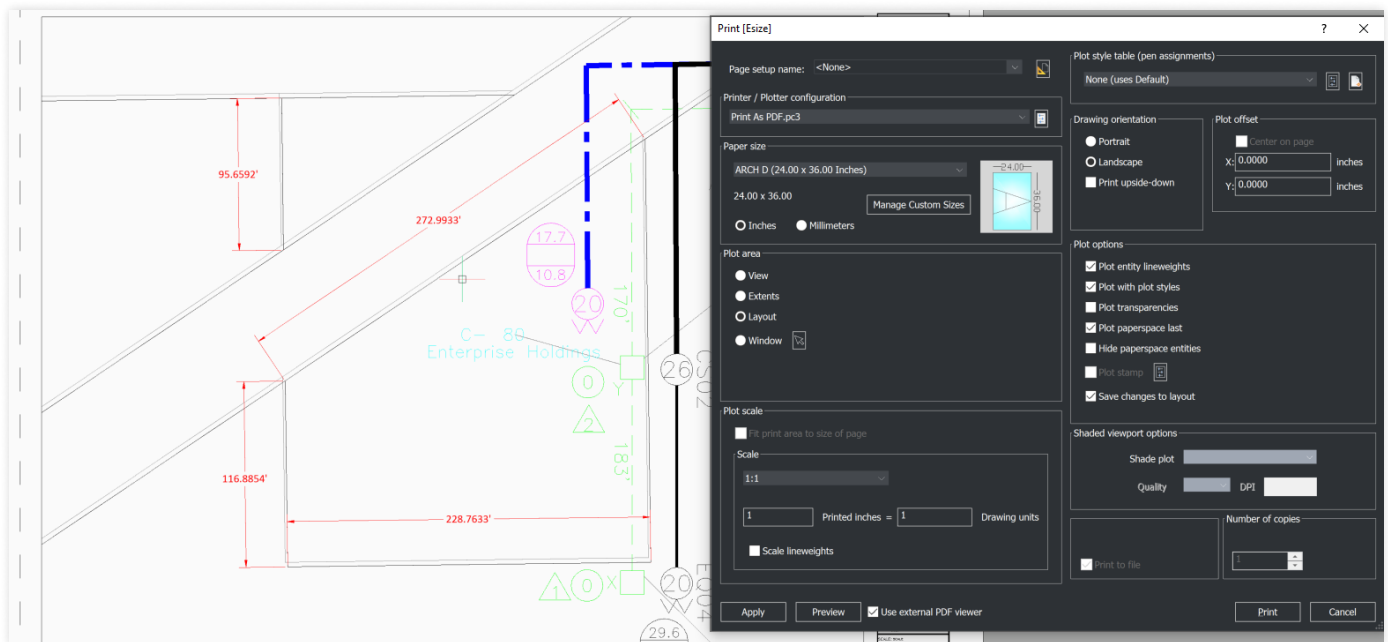
Modify entities within the existing drawing. Add text, insert blocks, draw linework, use snaps, check properties, create dimensions just as you normally would.





Plot your drawing by using the “Plot” command. Once you enter the command, the plot settings for your existing drawing will appear as defined.

You can plot to a folder location or directly to the plotter. **Inspect** the final output to validate that BricsCAD plotting produces the expected results.



Guided Lessons for Migration Assests and Configurations from AutoCAD to BricsCAD:
<https://lessons.bricsys.com/courses/1545931/lectures/35482970>

Additional help and support

This guide is to get you started with BricsCAD. It doesn't encompass every aspect of migration, other customizations, tools, and materials may also be needed.

For additional assistance and resources, please visit the Migration blog page:

<https://blog.bricsys.com/migration/>

What CAD professionals told us about migrating to BricsCAD:

"After 28 years of using AutoCAD, following a quick and easy installation, we seamlessly transitioned more than 1000 users with various years of experience to BricsCAD. The users are located around the globe, and they made the switch with no additional training required."

Lorelei Connors, CAD/Drafting Manager, Subsea 7

"First of all, BricsCAD makes it easy to transition from other CAD software. That process went very smoothly."

Technical Development Department at Nittetsu Texeng

"The transition from AutoCAD to BricsCAD is actually very easy: all commands are the same, and I can continue to use the .dwg files that I created with AutoCAD. After a morning, you will get the hang of BricsCAD."

Ben van Amersfoort, Owner Tekenbureau van Amersfoort

"The first advantage of BricsCAD is its pricing, combined with the perpetual licensing. The second big advantage is BricsCAD's high compatibility with other CAD software and the data files made with them."

Kunihiko Takemura, Technical Department General Manager, Takamiya

"A small team of two did all the preparations regarding our libraries and templates. Then we deployed BricsCAD running parallel to AutoCAD® LT to make sure we had a fallback if we needed it. When we made the migration from Windows 7 to Windows 10, we removed AutoCAD® LT and nobody ever noticed."

Steffen Lemmerzahl, Founding partner, SLIK Architekten

"Since there were both programs at the start of the transition, everyone could choose for themselves. After a short time, almost everyone switched over to BricsCAD."

Franz Dietz, CAD representative, EBB Ingenieurgesellschaft

"I'm surprised more people aren't using BricsCAD. I think that if everyone knew that they could get all the AutoCAD features they need and not have to buy subscription, then they'd switch. Plus, you save money. It's a no-brainer."

Jason Spilker, Project Engineer, Vector Structural Engineering

You are not alone, find out why more and more CAD professionals are switching to BricsCAD:

bricsys.com/en-eu/customer-cases

And have a look at the reviews on the G2 website:

g2.com/products/bricscad/reviews/bricscad-review-653216

What's next? Make the move to BricsCAD now and start reaping the benefits of more automation with AI and more flexible licensing all at a lower cost.