

## PR123-BRIC-W1-HA.B1-DR-ARF-1-D-3 .pdf

Location: [b. Minutes of meeting/PR123-BRIC-W1-HA.B1-DR-ARF-1-D-3 .pdf](#)

Uploaded by: [Charlotte Callaert](#) (July 16, 2024, 1:37 PM GMT+02:00)

Proposal

113.7 KB

1 (1/1)

### Meta data

#### CDE - ISO 19650 form

**Project name & Number:** PR123, Project Number (e.g. 123)

**Which organisation or company made this file? Project**

**Partners CODE:** BRIC

**Functional breakdown:** W1, Workpackage 1

**Where?:** HA.B1, Hall foundations

**Type of info in the file? :** DR, Tekening 2D/ Dessin (2D)

**What is it about (discipline)?:** ARF, Architecture/ Architectural finishes

**State:** D, Designed state

**Phase:** 3, Voorontwerp/ Avant-projet

**Description:** *no value inserted*

**Document Number :** 1

### Links

1		<b>Hans Declercq</b>	<b>panoramic-elevator.dwg</b>
March 25, 2024, 2:45 PM GMT+02:00			

### Workflows

#### Approval flow (finaal) - met finale goedkeuring - vrijgegeven: PR123-BRIC-W1-HA.B1-DR-ARF-1-D-3 .pdf (1)

By: [Charlotte Callaert](#)

Coordinator: [Charlotte Callaert](#)

Based on: [Approval flow \(finaal\) - met finale goedkeuring - vrijgegeven](#)

Completed tasks	Assigned to	State set	By
goedkeuring architect A	Architect	Ja, ik keur goed	Charlotte Callaert 7/16/24, 1:39 PM GMT+02:00

---

Goedkeuring ingenieur

Engineer A

Goedgekeurd

Charlotte Callaert

7/16/24, 1:39 PM GMT+02:00

---

Document status aanpassen

Coordinator

Gereed

Charlotte Callaert

7/16/24, 1:38 PM GMT+02:00

---

## Annotations

1



**Charlotte Callaert**

July 16, 2024, 1:48 PM GMT+02:00

**Please add door numbers on the plan + dimensions**

---

2



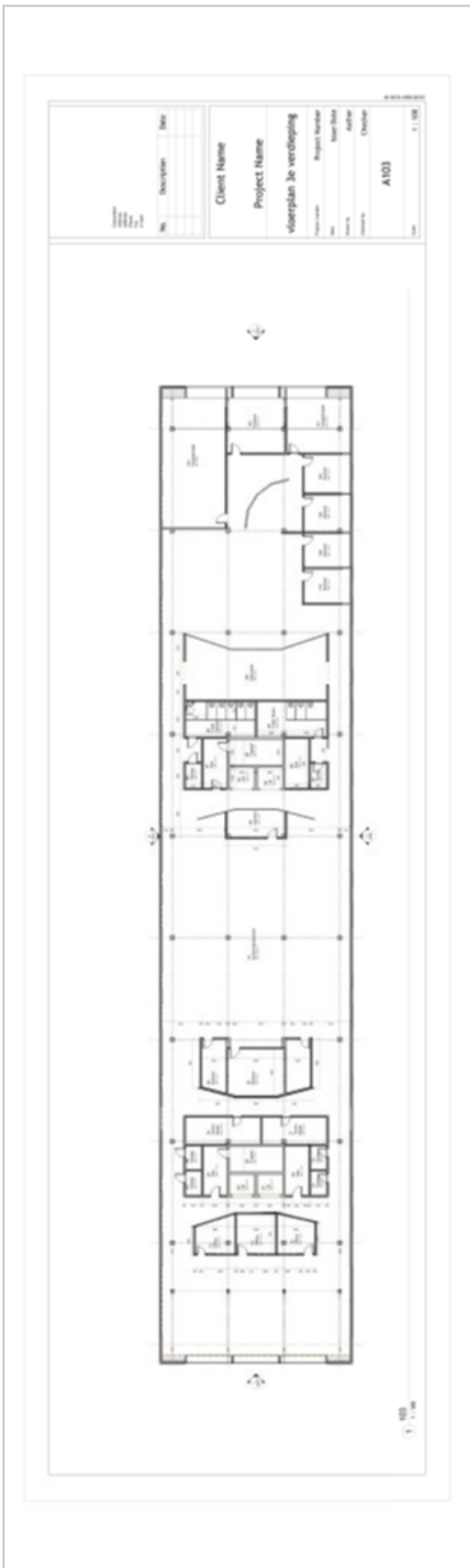
**Charlotte Callaert**

July 16, 2024, 1:47 PM GMT+02:00

**To review**

Please review this

---





1

**Charlotte Callaert**

7/16/24, 1:48 PM GMT+02:00

**Please add door numbers on the plan + dimensions**

2

**Charlotte Callaert**

7/16/24, 1:47 PM GMT+02:00

**To review**